
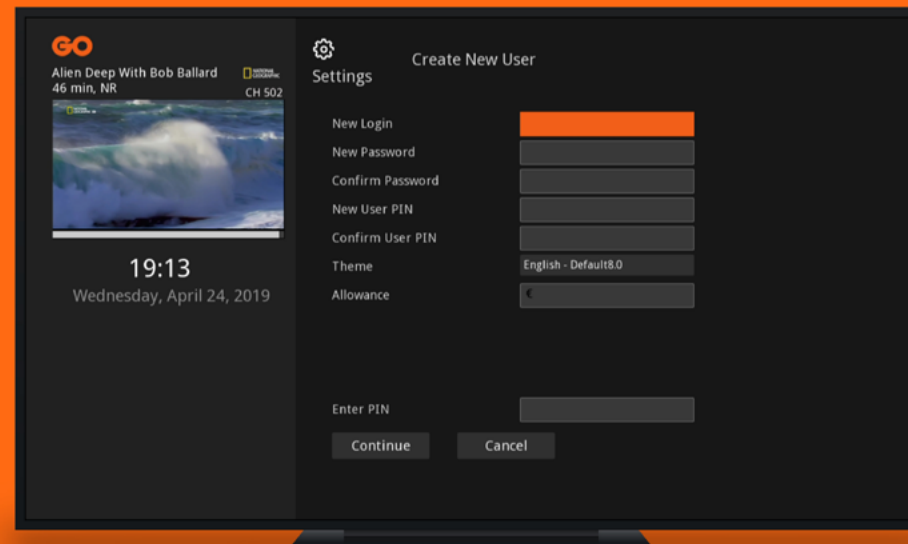


Catch Up your favourite show

Use the Arrow keys to go back in 30 min chunks or press  to go back in 12 hr chunks

Alternatively you can Press **MENU** and select Search. You now need to key in the programme title. With the Arrow Keys navigate to the TV programme you wish to watch and click on the **OK** key

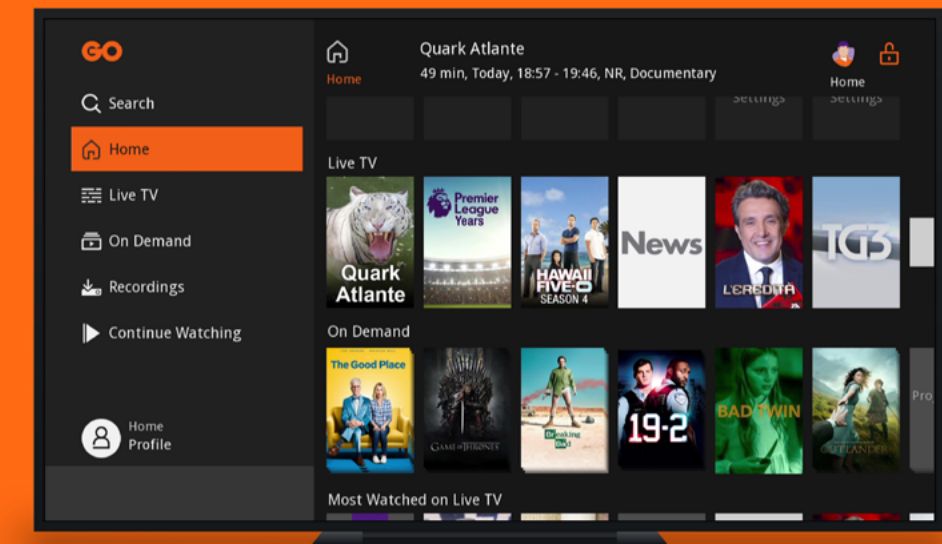


Create Different Profiles

Press **MENU** and navigate on Home Profile and select Users

When prompted to enter a PIN number, key in your default PIN 1234. This PIN will be used to log into the respective user profile on your TV and on TV Anywhere

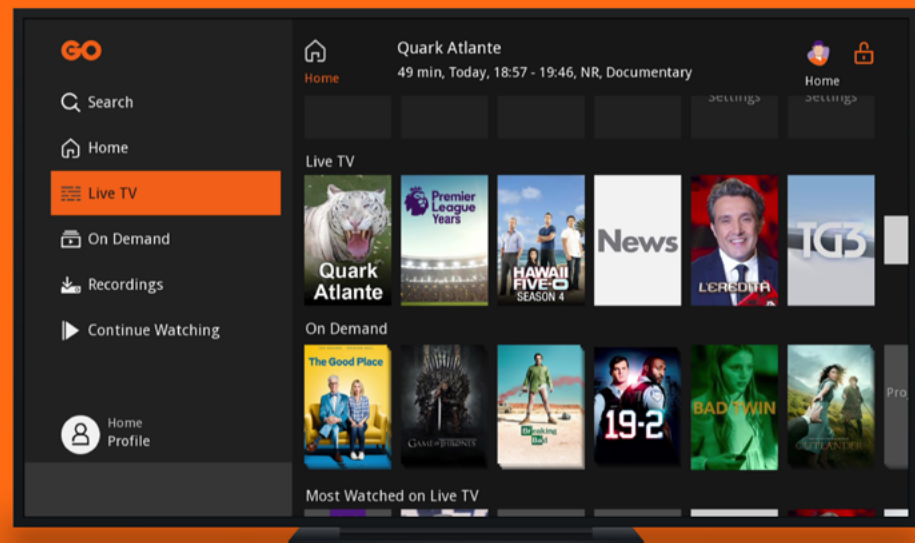
To add a new Profile select Add



Welcome to GO TV

Quick User Guide





Accessing LIVE TV

There are 3 easy ways how to get to the channels you are subscribed to

Option 1

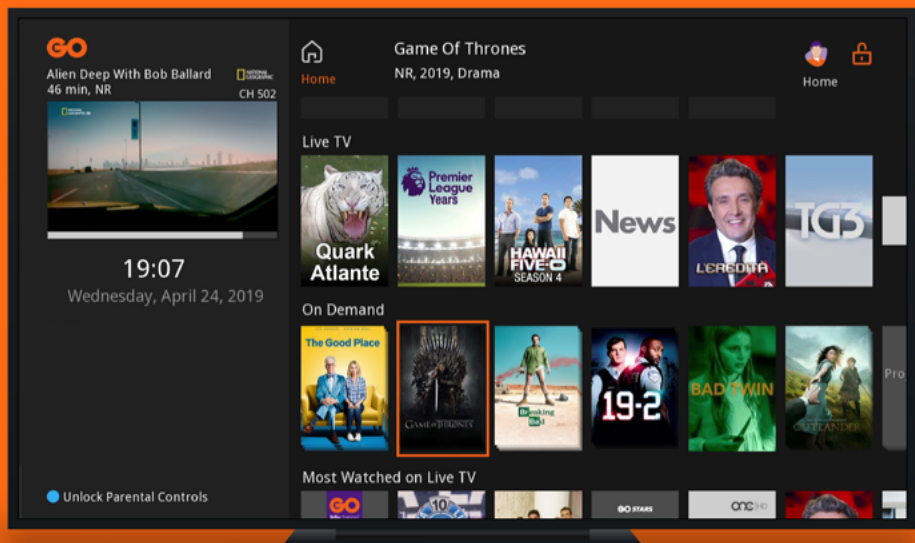
Press **GUIDE** button on your remote

Option 2

Press **MENU** and select Live TV by using the arrow keys and the **OK** button on your remote

Option 3

If you know the number of the channel, you can enter it using the NUMBER KEYS



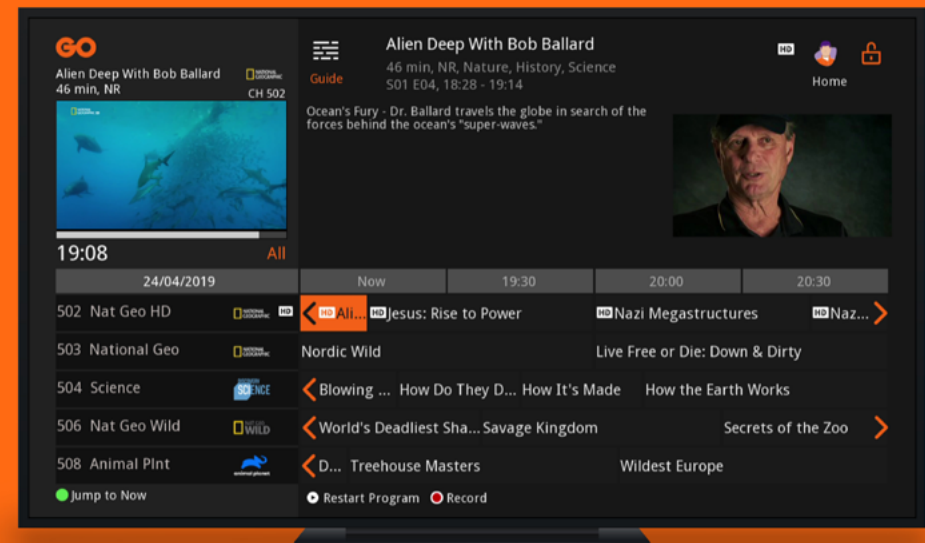
Watch On Demand Movies and Box sets

Press **MENU** and select On Demand from the pop-out menu on the left

Select from an array of movies or series you want to watch and then press **OK** and **PLAY**

Key changes to your experience

No need to press **RECORD** button to access On Demand.



Record your favourite show

You can start recording the programme you are currently watching by pressing **RECORD**

The **RECORD** icon will appear next to the programme listing

If you would like to record an upcoming programme press **MENU** and select Search. With the ARROW KEYS navigate to the TV programme you wish to watch and press **RECORD**

IMPORTANT NOTE: Upon migration, please note that all saved recordings will be lost. You can re-schedule all recordings using the instructions above.

